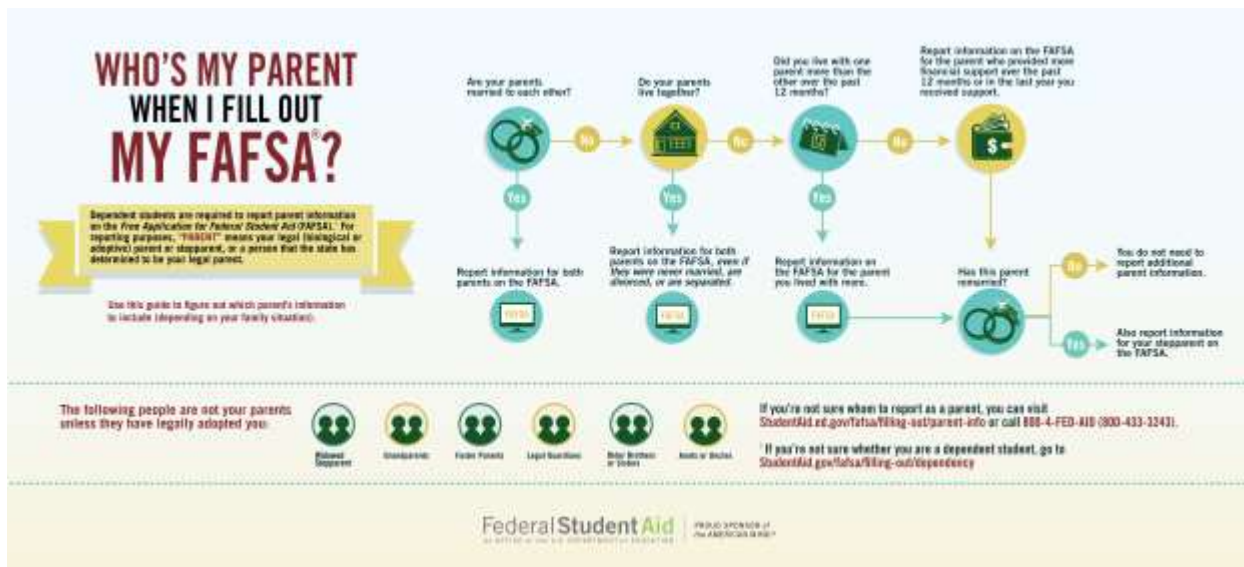


Financial Information (8 of 9)

We need basic information regarding your financial situation as we consider your application. In order to do so, we need to have an accurate estimate of your Expected Family Contribution (EFC). Your EFC is ultimately determined by completing the Free Application for Federal Student Aid (FAFSA) or the Washington Application for State Financial Aid (WASFA). Because the FAFSA and WASFA are not available until October of your senior year, one way to arrive at an estimate is to utilize the [FAFSA4Caster](#). This online tool allows families to enter financial information from your last tax returns to arrive at an early estimate of their EFC.

The following steps are required to complete this part of the application:

1. Visit fafsa.ed.gov/fafsa/app/f4cform
2. Read all instructions very carefully and complete the form by clicking the "SUBMIT" button. The process should only take five minutes if you have all of the required income figures. Be sure to read the "Help and Hints" on the right side of the page carefully for instructions and clarification on each question. Refer to [this guide](#) to determine which parent(s)' information to include.



3. On the following screen, before entering any additional information, scroll down and click the "CALCULATE" button. Midway down the page, you will now find "Your estimated EFC." Record this number.

Note that a social security number is not required to complete the FAFSA4Caster, and anyone can complete the form, regardless of immigration status.

Please answer the following questions using the figures that you entered on the FAFSA4Caster and the estimated EFC that was calculated for you. [This illustration](#) shows where you can find the figures for this form on the FAFSA4Caster.



FAFSA4CASTER SUMMARY

How many people are in your parent's household? *

Number of people, including you

While you are in college, how many people in your parent's household will be colle

Number of people, including you

What was your parent's adjusted gross income (AGI) from the most recent tax return? *

\$

Estimated EFC (Expected Family Contribution) *

\$

FAFSA4caster

Parent Information

How many people are in your parents household?

While you are in college, how many people in your parents household will be college students? (Include yourself)

Has your parent filed taxes recently?
 Yes No

What was your parent's adjusted gross income from the most recent tax return?
 \$,00

After Click

College Cost You Entered \$

Total Aid Available \$
This includes the federal student aid we estimated and any of the other aid you entered.

Difference \$
Your estimated EFC is 1,082

ESTIMATE

FAFSA4CASTER SUMMARY

How many people are in your parent's household? *

Number of people, including you

While you are in college, how many people in your parent's household will be college students? *

Number of people, including you

What was your parent's adjusted gross income (AGI) from the most recent tax return? *

\$

Estimated EFC (Expected Family Contribution) *

\$

Does your family anticipate that your future financial situation will change significantly from the figures you provided here? *

Yes No

If yes, or if there is anything significant about your family's financial circumstances that is not reflected in the information you provided on the FAFSA4Caster (e.g., high uninsured medical expenses, expected changes in employment), please provide specific details below, including estimated dollar amounts.

0/200 words

OTHER INFORMATION

Are you or the parent(s) you live with receiving free or reduced lunch, social security benefits, disability benefits, food stamps, or subsidized housing? *

Yes No

Did you qualify and sign up for the Washington State College Bound Scholarship program while you were in 7th or 8th grade? *

Yes No

Please list any other scholarships that you have applied for *or intend to apply for* along with the total amount of the scholarship over four years. List one scholarship per line as shown. *

Scholarship Name (Total Amount Over 4 Years)